

RESEARCH USE ONLY.
NOT FOR USE IN DIAGNOSTIC PROCEDURES.



DAKEWE PathDR. NS40R

Fully Automated IHC stainer

Supports IHC, mIHC, ISH, and various research demands

Precision defines the path to an uncertain future

PathDR. NS40R

FULLY AUTOMATED IHC STAINING SYSTEM

On the basis of the diagnosis platform, Dakewe NS40R Fully Automated IHC Staining System further offers flexibility to assist researchers to unleash unlimited potential: fully customizable protocols, reagent systems, and mixed reagent configurations, and bridges clinical diagnosis and scientific research, driving innovation in translational medicine.



Intuitive

Intuitively view reagent and run status and operate runs in real time on the touch screen, without having to move to the console.

Reliable

The heating module features a dual-seal design to ensure long-term stability and durability. Self-testing on startup and constant self monitoring provide smooth operation.



Efficient

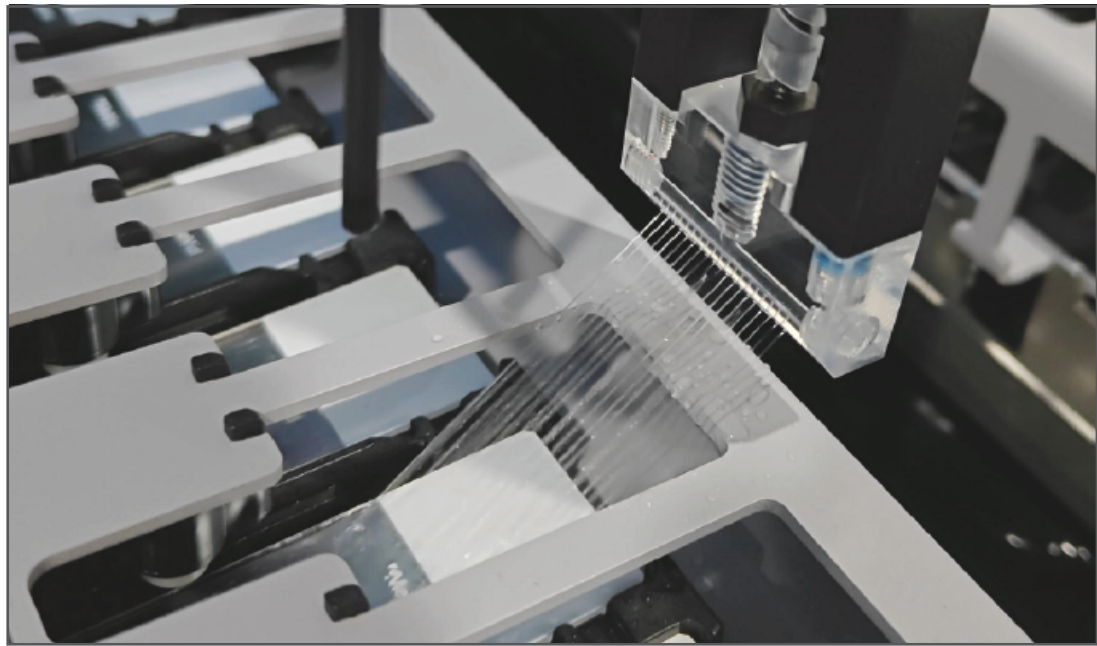
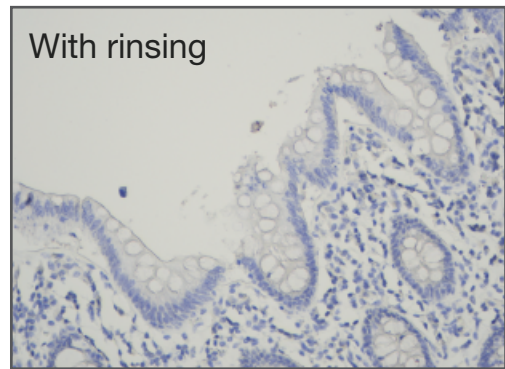
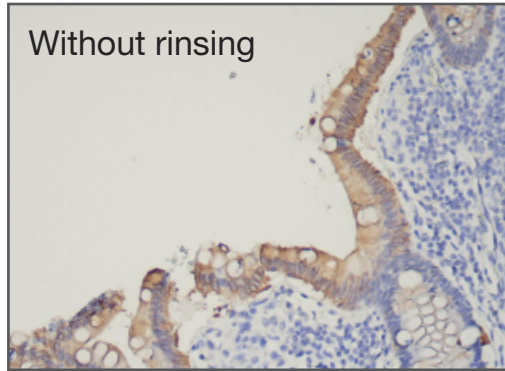
Complete a run with 40 slides in 2.5 - 3.5 hours and load the next tray continuously.

Runs with delayed start adapt to your schedule.

Accurate

Individual slide heating fits the staining protocol with more flexibility.

Accurate dosage and temperature control ensure high performance.

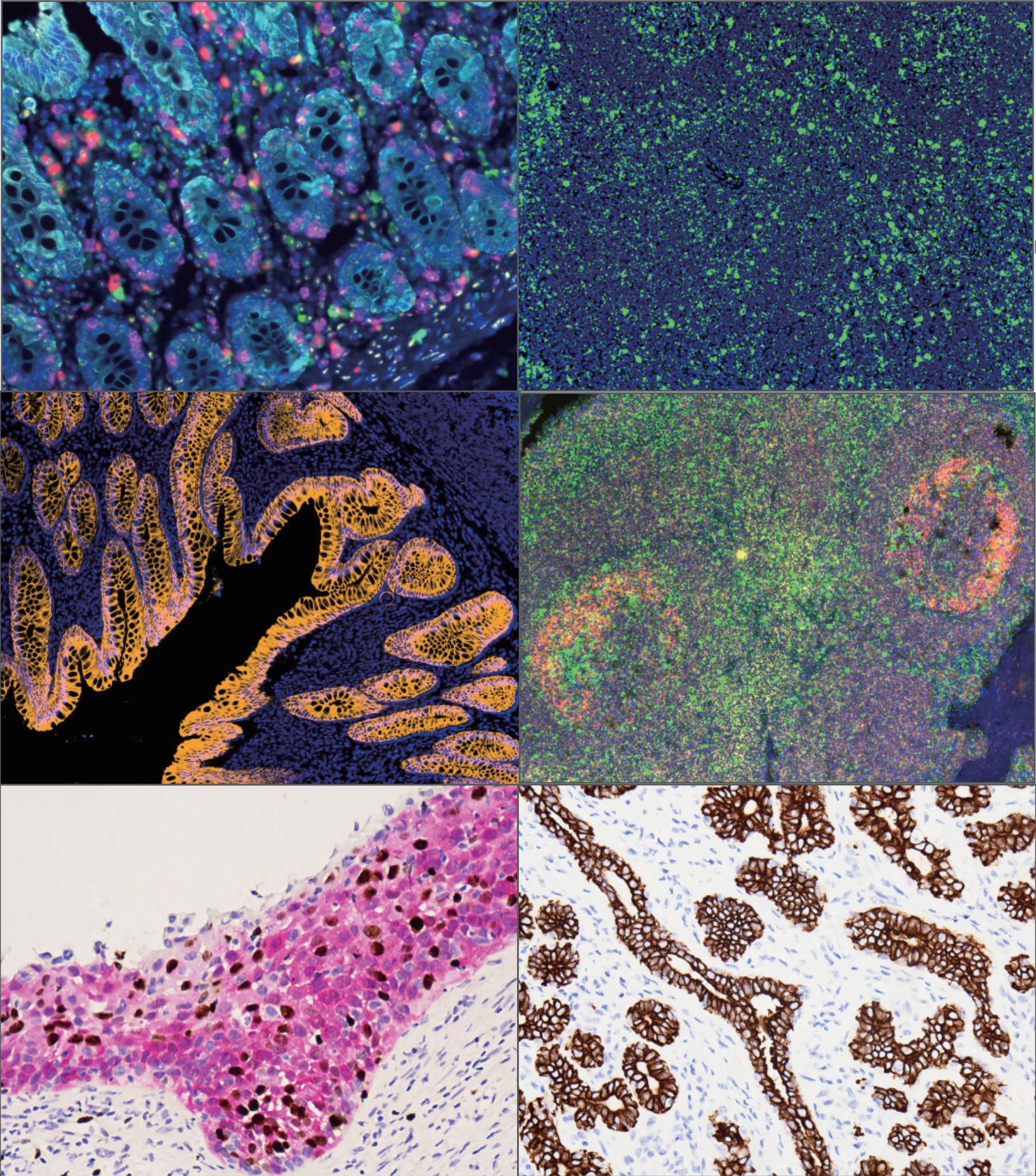


Engineered rinsing step reduces non-specific background and coffee-ring effect, offering a clear and fresh slide.



Traceability

Dakewe cover lid is designed for economical reagent consumption. Each cover lid has a unique DataMatrix recognizable by the stainer to track usage, contributing to optimal staining performance.



Your idea, your way

ISH
In Situ
Hybridization

mIHC
Multiplex
Staining

IF
Immuno-
fluorescence

CISH
Chromogenic
In Situ
Hybridization

IHC
Immunohisto-
chemistry

TUNEL
TUNEL Assay

BMS
Brightfield
Multiplex Staining

CTC
Circulating
Tumor Cell

FISH
Fluorescence
In Situ
Hybridization

ICC
Immuno-
cytochemistry

DS
Double
Staining

Unleash all potential with full flexibility

- Use your own probes, antibodies and auxiliary reagents
- Set your own incubation duration and temperature
- Choose your dispense type

Multi-plex staining

- Freely create your own staining protocols
- Stain chromogenically or fluorescently
- Perform IHC and ISH in any order
- Multiple markers on a slide
- Maximum 4 different chromagens mixed on-board
- Multiple rounds of antigen retrieval to support reagent stripping



Add reagent

Reagent name: My MIX DAB

Abbreviated name: MyDAB

Generic name:

Type: Mixed reagent

Mixed type: Default

Expiry date(s): 1800

Supplier:

#	Reagent name	Mixture Ratio
1	My DAB Part B	10
2	My DAB Part A	1
3	My DAB Part B	10

[Add reagent](#) [Delete reagent](#)

Compatible bulk reagents:

*Wash

☒ Preferred ☐ Hazardous

[Cancel](#) [OK](#)

Specifications

Process	Fully automated from baking till counter stain
Slide capacity	10 slides/tray, 4 trays. Finished slides trays can be reloaded continuously
Turnaround time	2.5 - 3.5 hours per run
SSA temperature	Ambient to 110 °C, ± 1 °C, each slide can be heated independently
Bulk reagent container capacity	5 L
Reagent container capacity	3 ml, 6 ml (use with a tube), 7 ml, 30 ml
Reagent container quantity	40
Waste container capacity	5 L
Dimenisons (WxDxH)	1155 × 900 × 1620 mm
Weight	Approx. 350 kg
Power	100 - 240 VAC, 50/60 Hz, 1000 VA

DAKEWE

Dakewe medical
Shenzhen, China
www.dakewemedical.com
Ver 1.0, Rev. Apr 2025

